

**Crafts  
Council  
Gallery**

**Creative  
Space for  
Exhibitions.**



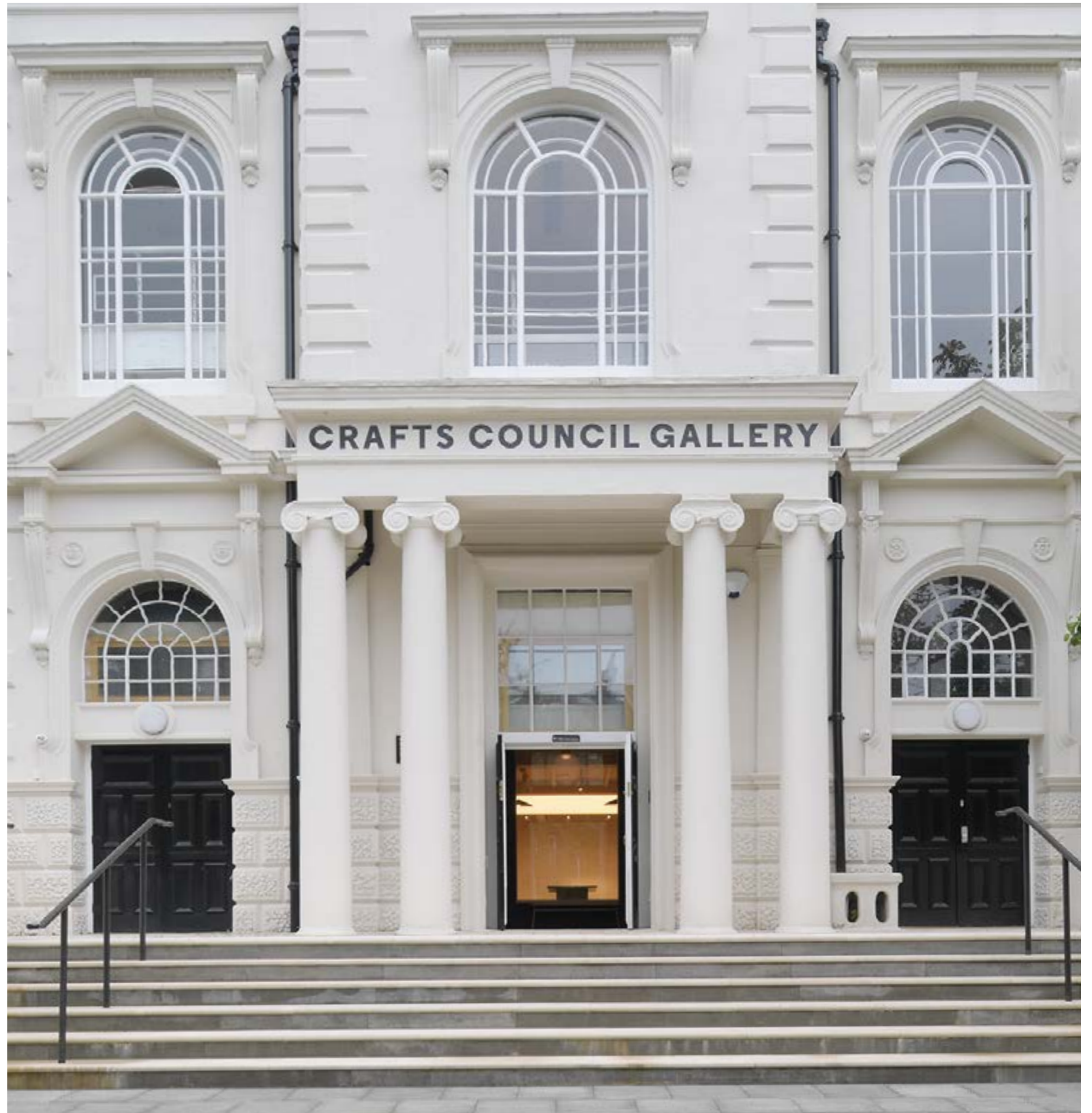
## A creative space for exhibitions

Crafts Council Gallery has been specifically designed as a gallery space is ideal for hosting an exhibition.

Originally built as a 19th century congregational Methodist chapel, it has been re-imagined and re-designed by AOC Architects to inspire creativity.

The building boasts an impressive white façade with steps, arched windows, ionic columns and a gated, illuminated forecourt with occasional seating. Step inside and the visitor is welcomed by a natural, daylight filled lobby separated from the gallery by a glass window and an arch framed set of doors.

The open plan gallery features restored original parquet flooring. The room is filled with assimilated daylight by a calming central light box. The walls are clay plastered and suitable for hanging. There is adjustable, museum quality track lighting installed by specialists TM Lighting. Additionally, a small break-out space is available for video installations.



# Gallery specifications

## Dimensions

Gallery - 180 m<sup>2</sup> + 12 m<sup>2</sup> ante room

Welcome Space - 35 m<sup>2</sup>

Forecourt approx. - 100 m<sup>2</sup>

## Lighting

Exhibition track lighting system with dimmable white LED spotlights by TM Lighting.  
Central Barrisol light box (dimmable).

## AV & Power

Ceiling mounted projector and screen in library area.

Multiple power outlets are available in the gallery and welcome space.

32 amp 3-phase and 32 amp single phase commando socket are available in the forecourt.

## Security

CCTV cameras are installed inside the gallery, all entrances and the forecourt.

Intruder alarm system.

Internal doors with keypad access.

Crafts Council staff on site during opening hours.

SIA is mandatory during opening hours - additional costs apply.



## Accessibility

Platform lift to the gallery entrance.  
All gallery areas are accessible.

## Technical support

It's mandatory to work with one of our technicians during the install and de-install - costs to be borne by the Hirer.

## Hire rates

Dry hire from £12,000 + VAT,  
Monday-Saturday, 11.00 - 18.00 daily  
Day rates and additional hours available  
upon request.

Benefits include

One weekday preview, 18.00 - 20.00

Crafts Council staff onsite  
during opening hours

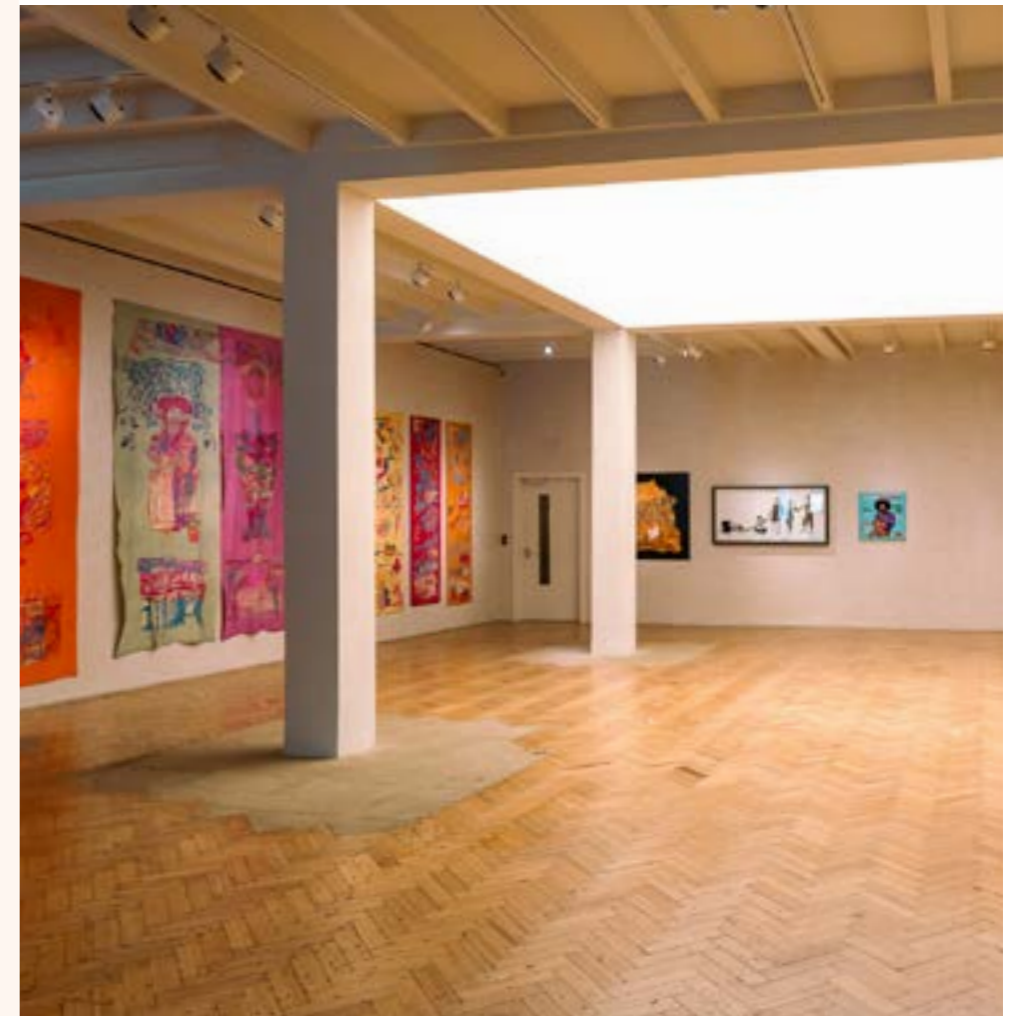
Marketing support package - enquire for  
more information

Available extras

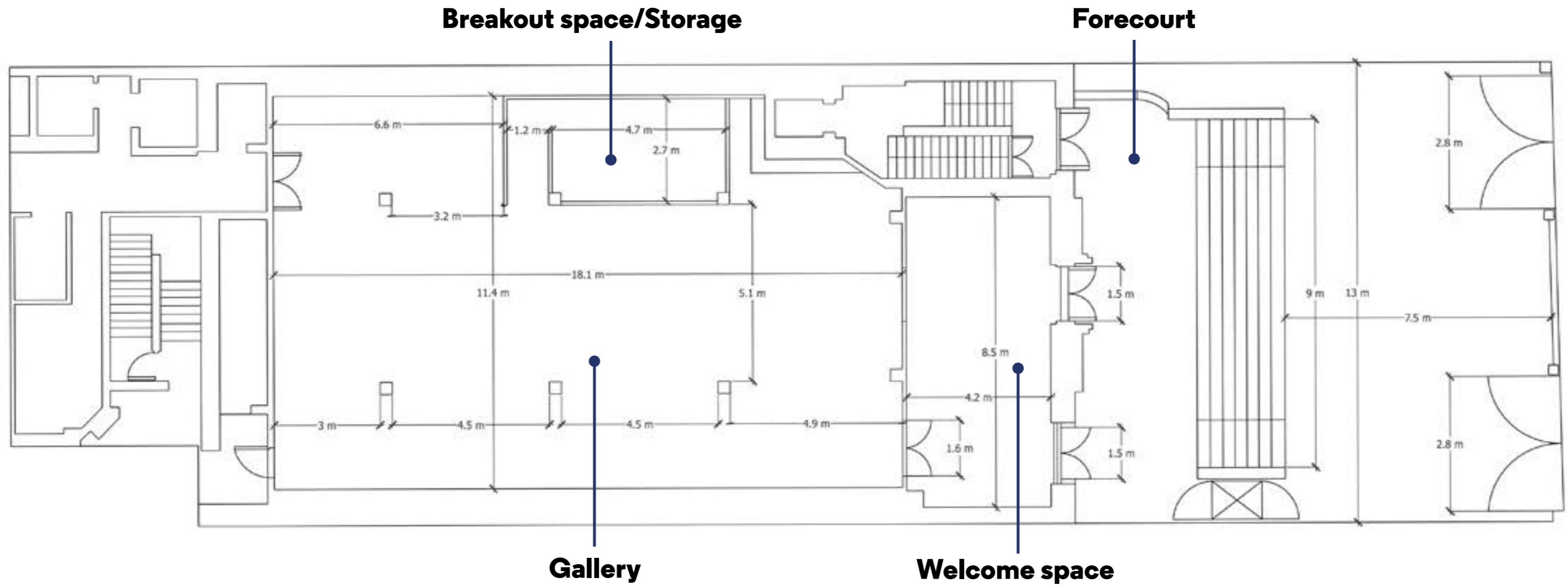
Additional days and opening hours

Invigilators and security personnel

Advanced marketing packages



# Floorplan



# Crafts Council

When booking our venue for your exhibition you are supporting an important cause - Crafts Council is a registered charity, and all income generated from venue hires directly supports our work to inspire making, empower learning and nurture craft businesses.

## Make an enquiry

Make an enquiry today by contacting our venue hire manager on

Tel: 07562 958 262

[hire@craftscouncil.org.uk](mailto:hire@craftscouncil.org.uk)



## Location

Crafts Council Gallery  
44a Pentonville Road  
London, N1 9BY  
[View on Google Maps](#)

## Public transport

### London Underground

5-minute walk from Angel  
15-minute walk from Kings Cross

### Bus routes

Nearby bus stops include:  
19, 30, 38, 56, 73, 189, 205, 214, 341,  
394, 476.

### Mainline train stations

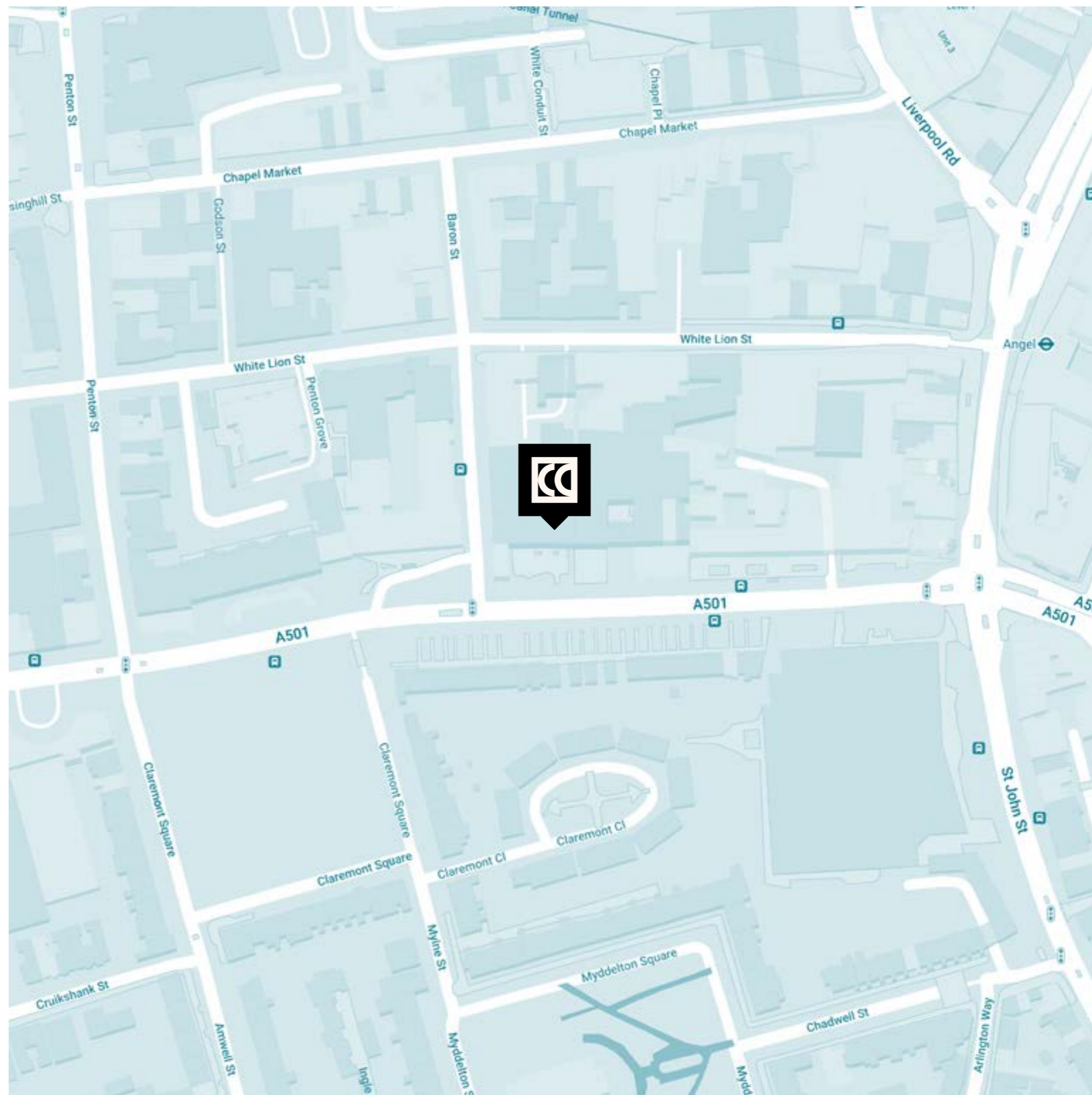
15-minute walk from St Pancras and  
Kings Cross Station.

### Parking

There are no parking facilities  
at the Crafts Council Gallery. Access  
to the forecourt is available for drop  
offs, deliveries and collections.

5-minute walk to the nearest public car  
park.

7 Exhibitions at Crafts Council Gallery



# We are looking forward to welcoming you.

[craftscouncil.org.uk/venue-hire](https://craftscouncil.org.uk/venue-hire)

Images by Reuben Black, Joe Humphrys, Zivile Geina, David Grandor

Registered Charity 280956



Supported using public funding by  
**ARTS COUNCIL  
ENGLAND**