

Crafts
Council
Gallery

Creative
Space for
Exhibitions.



A creative space for exhibitions

Crafts Council Gallery has been specifically designed as a gallery space is ideal for hosting an exhibition.

Originally built as a 19th century congregational Methodist chapel, it has been re-imagined and re-designed by AOC Architects to inspire creativity.

The building boasts an impressive white façade with steps, arched windows, ionic columns and a gated, illuminated forecourt with occasional seating. Step inside and the visitor is welcomed by a natural, daylight filled lobby separated from the gallery by a glass window and an arch framed set of doors.

The open plan gallery features restored original parquet flooring. The room is filled with assimilated daylight by a calming central light box. The walls are clay plastered and suitable for hanging. There is adjustable, museum quality track lighting installed by art lighting specialists TM Lighting.



Gallery specifications

Dimensions

Gallery - 180 m2 + 12 m2 ante room

Welcome Space - 35 m2

Forecourt approx. - 100 m2

Lighting

Exhibition track lighting system with dimmable white LED spotlights by TM Lighting.
Central Barrisol light box (dimmable).

AV & Power

Ceiling mounted projector and screen in library area.

Multiple power outlets are available in the gallery.

One 32 amp 3-phase and one 32amp single phase commando socket are available in the Forecourt.

Technical support

It's mandatory to work with one of our technicians during the install and de-install - costs to be borne by the Hirer.



Security

CCTV cameras are installed inside the gallery, all gallery entrances and the forecourt.

Intruder alarm system.

Internal doors with keypad access.

Crafts Council staff on site during opening hours.

SIA is mandatory during opening hours - additional costs apply.

Accessibility

Platform lift to the gallery entrance.

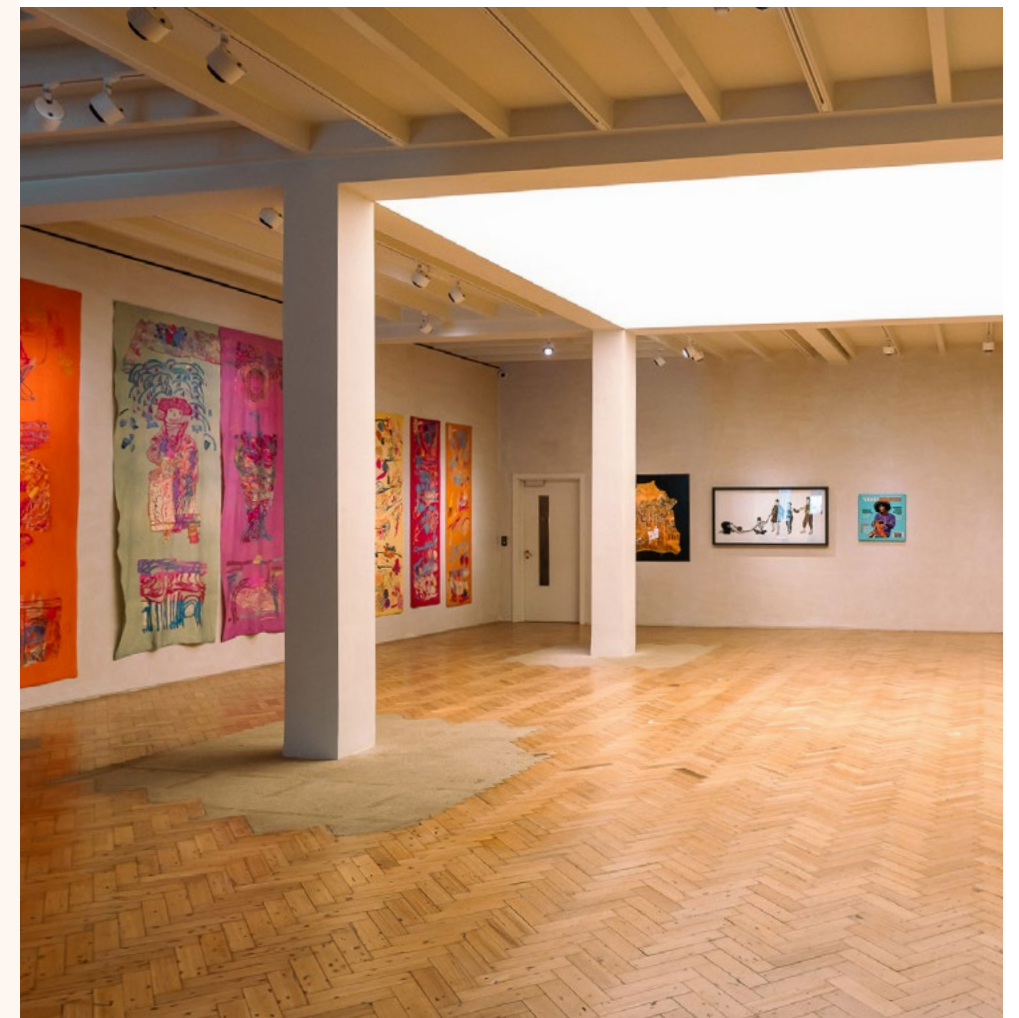
All gallery areas are accessible.

Advertising

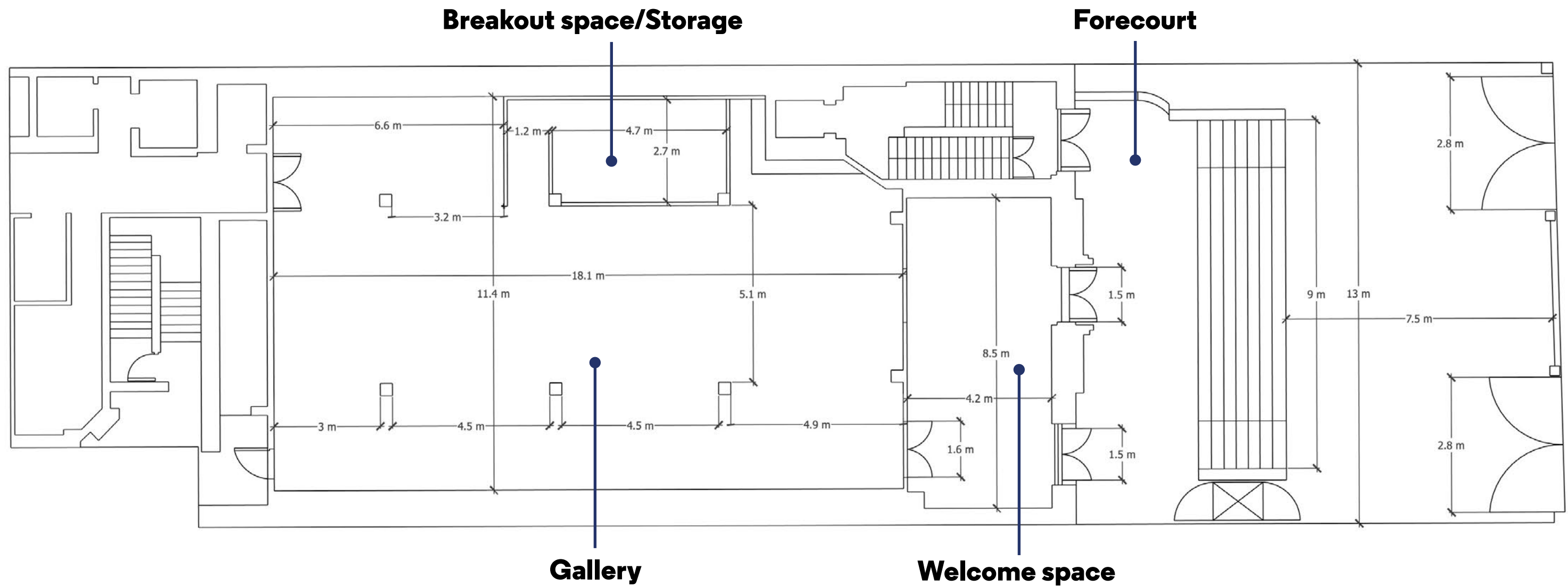
We reach an audience of millions worldwide via digital channels, events and membership communities. Our audience includes artists, designers, curators, makers and other creative professionals.

- Listing in the Crafts Council's 'What's On' section
- 1x post in our Craft Stories newsletter
- 1x Instagram grid post with a link in bio to the What's On listing

Please contact us for more information about our digital advertising offers to support your project.



Floorplan



Crafts Council

When booking our venue for your exhibition you are supporting an important cause - Crafts Council is a registered charity, and all income generated from venue hires directly supports our work to inspire making, empower learning and nurture craft businesses.

Make an enquiry

Make an enquiry today by contacting our venue hire manager on

Tel: 07562 958 262

hire@craftscouncil.org.uk



Location

Crafts Council Gallery
44a Pentonville Road
London, N1 9BY
[View on Google Maps](#)

Public transport

London Underground

5-minute walk from Angel
15-minute walk from Kings Cross

Bus routes

Nearby bus stops include:
19, 30, 38, 56, 73, 189, 205, 214, 341,
394, 476.

Mainline train stations

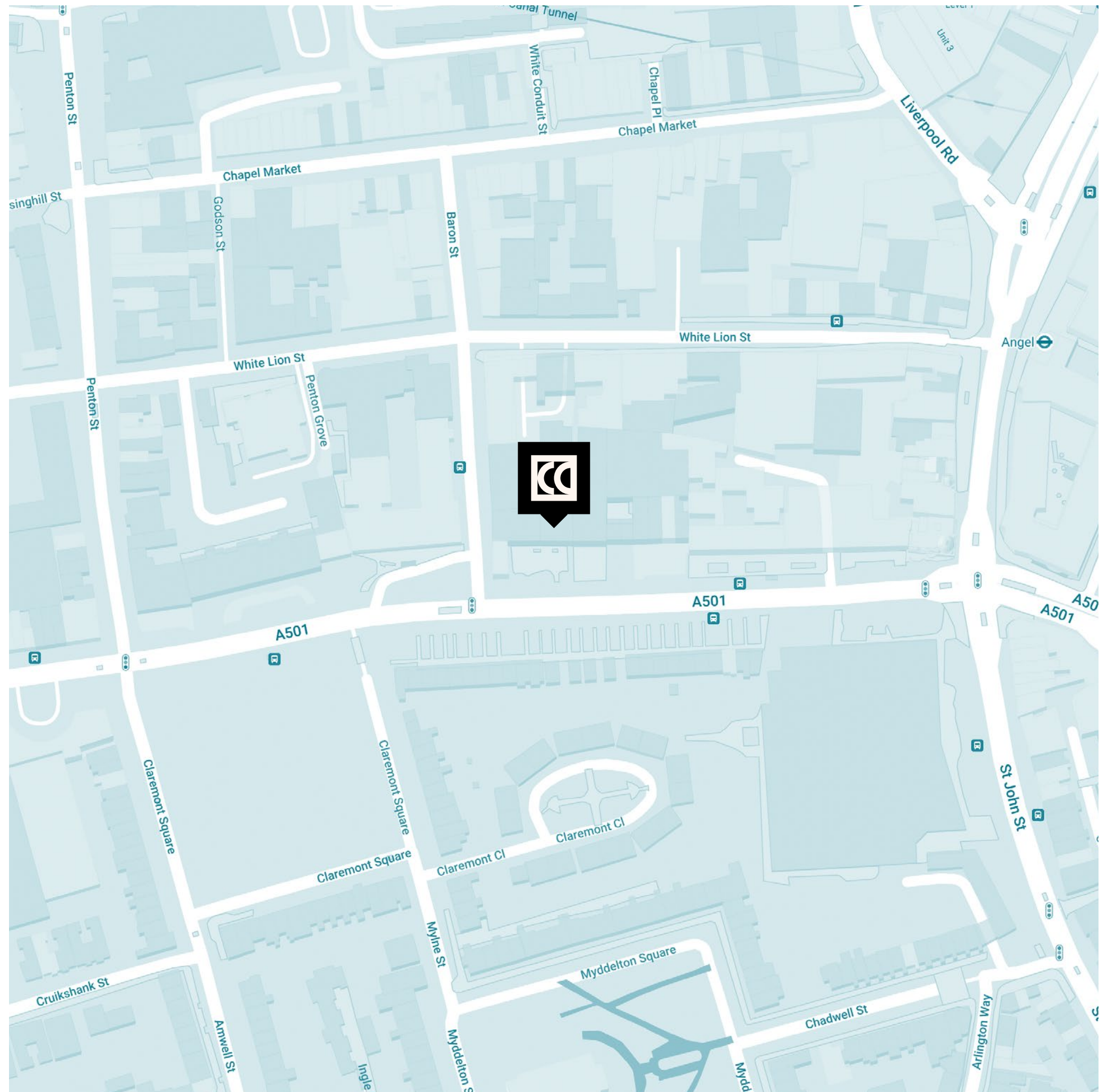
15-minute walk from St Pancras and
Kings Cross Station.

Parking

There are no parking facilities
at the Crafts Council Gallery. Access
to the forecourt is available for drop
offs, deliveries and collections.

5-minute walk to the nearest public car
park.

7 Exhibitions at Crafts Council Gallery



We are looking forward to welcoming you.

craftscouncil.org.uk/venue-hire

Images by Reuben Black, Joe Humphrys, Zivile Geina, David Grandor

Registered Charity 280956



Supported using public funding by
**ARTS COUNCIL
ENGLAND**