



# Craft School: Jasleen's Challenge

## Timetable of Events

**Educator Forums - 4.00 - 5.30pm**

**#1: The Make First Approach  
for All Key Stages**

Wednesday 15th October 2025

**#2: The Brief & Challenge  
for EYFS**

Wednesday 12th November 2025

**#3: The Brief & Challenge  
for Primary**

Tuesday 9th December 2025

**#4: The Brief & Challenge  
for Secondary**

Wednesday 28th January 2026

**#5: Submission Support  
for EYFS & All Key Stages**

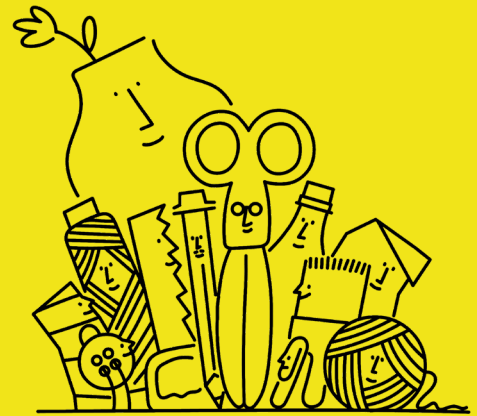
Wednesday 4th March 2026

**#6: Submission Support  
for EYFS & All Key Stages**

Wednesday 18th March 2026

**Submissions deadline:**

Friday 1st May 2026



**Make First Principle #9:**

Learn together as a community!

**CPD Sessions - 4.00 - 5.30pm**

**CPD #1 - Learning Spaces**

**EYFS Specific CPD:**

Wednesday 22nd October 2025

**CPD #2 - People & Place  
for EYFS & All Key Stages:**

Wednesday 19th November 2025

Craft as a tool to explore personal narratives.

**CPD #3 - Coming Together as Community  
for EYFS & All Key Stages:**

Wednesday 21st January 2026

Craft as a social practice for community.

**CPD #4 - Reimagining Community  
for EYFS & All Key Stages:**

Wednesday 25th March 2026

Craft as a space for cultural expression and liberation.