



Craft School: Jasleen's Challenge

Timetable of Events

Educator Forums - 4.00 - 5.30pm

**#1: The Make First Approach
for All Key Stages**

Wednesday 15th October 2025

**#2: The Brief & Challenge
for EYFS**

Wednesday 12th November 2025

**#3: The Brief & Challenge
for Primary**

Wednesday 10th December 2025

**#4: The Brief & Challenge
for Secondary**

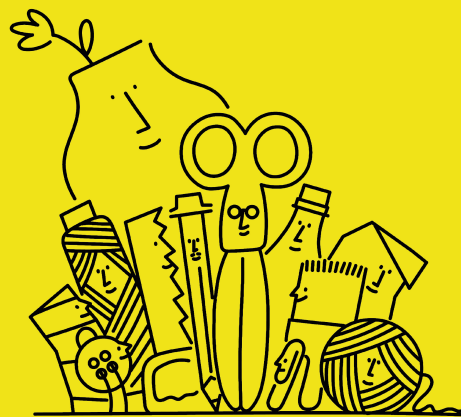
Wednesday 28th January 2026

**#5: Submission Support
for EYFS & All Key Stages**

Wednesday 4th March 2026

**#6: Submission Support
for EYFS & All Key Stages**

Wednesday 18th March 2026



Make First Principle #9:

Learn together as a community!

CPD Sessions - 4.00 - 5.30pm

CPD #1 - EYFS Specific CPD:

Wednesday 22nd October 2025

Craft learning environments for sensory play.

CPD #2 for EYFS & All Key Stages:

Wednesday 19th November 2025

Craft as a tool to explore personal narratives.

CPD #3 for EYFS & All Key Stages:

Wednesday 21st January 2026

Craft as a social practice for community.

CPD #4 for EYFS & All Key Stages:

Wednesday 25th February 2026

Craft as a space for cultural expression and liberation.